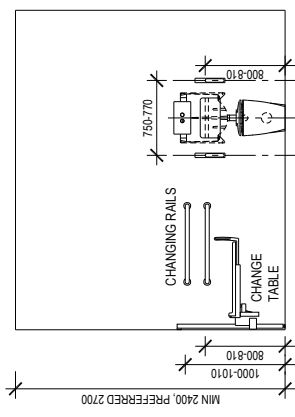
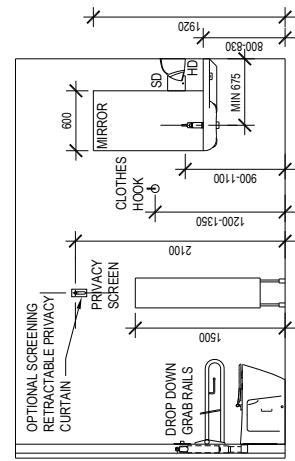


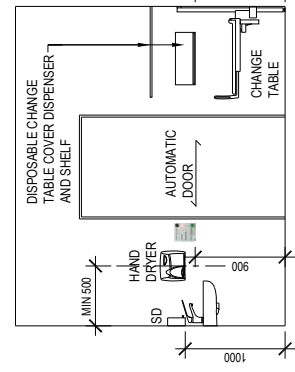
COPYRIGHT - ALL RIGHTS RESERVED
 THE INFORMATION CONTAINED HEREIN IS THE PROPERTY OF TOWNSHIP OF WINDSOR
 AND IS NOT TO BE REPRODUCED OR TRANSMITTED IN ANY FORM OR BY ANY MEANS
 WITHOUT THE WRITTEN PERMISSION OF TOWNSHIP OF WINDSOR
 THIS DOCUMENT IS PROVIDED AS INFORMATION AND IS NOT TO BE USED FOR ANY OTHER PURPOSE



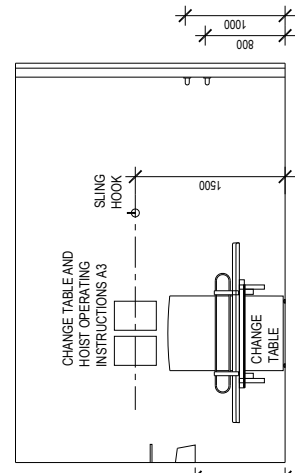
ELEVATION A



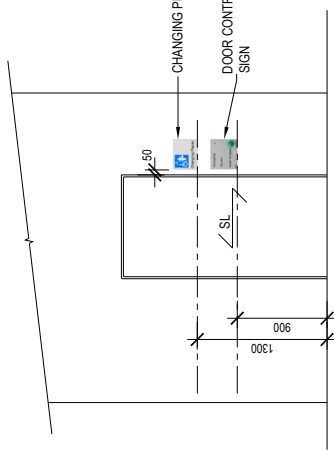
ELEVATION B



ELEVATION C

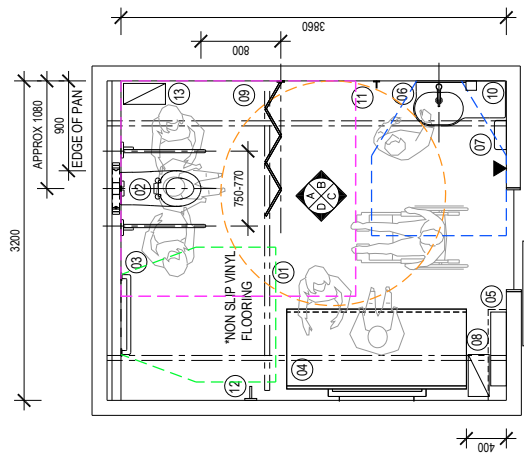


ELEVATION D



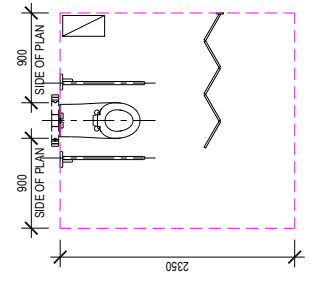
EXTERNAL DOOR ELEVATION

- 01 ROOM COVERAGE HOIST
- 02 ACCESSIBLE WC INCL BACKREST AND DROP DOWN RAILS
- 03 TWO 800MM LONG HORIZONTAL CHANGING RAILS AT 800MM AND 1000MM ABOVE FLOOR LEVEL
- 04 ADJUSTABLE HEIGHT CHANGE TABLE, 1800MM LONG WITH SIDE SAFETY RAIL
- 05 DISPOSABLE CHANGE TABLE COVER DISPENSER WITH SHELF OVER (OPTIONAL, REFER SPECIFICATION)
- 06 HAND WASH BASIN WITH INTEGRATED SHELF
- 07 HAND DRYER
- 08 INCONTINENCE PAD DISPOSAL BIN
- 09 RETRACTABLE PRIVACY SCREEN 1500MM LONG
- 10 SOAP DISPENSER
- 11 CLOTHES HOOK
- 12 LARGE SLING HOOK
- 13 SANITARY NAPKIN DISPOSAL BIN
- ▶ AUTOMATIC DOOR CONTROL

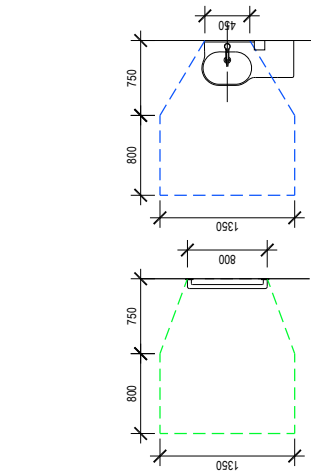


AUTOMATIC DOOR CLEAR OPENING WIDTH:
 950MM MINIMUM
 (1100MM MIN. AT BEACH OR LAKE LOCATIONS)

OPTION 1A
 RECTANGULAR CONFIGURATION
 WITHOUT SHOWER

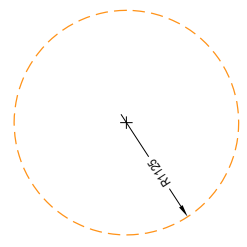


PAN CIRCULATION SPACE



CHANGING RAILS CIRCULATION SPACE

BASIN CIRCULATION SPACE



TURNING CIRCULATION SPACE



Changing Places

OPTION 1A DESIGN MAY 2017